



1. DELTA DVP Series

1.1. DELTA DVP-ES Serial Interface

The following section describes the system configuration and interface between DELTA DVP and TOP by serial RS-232.

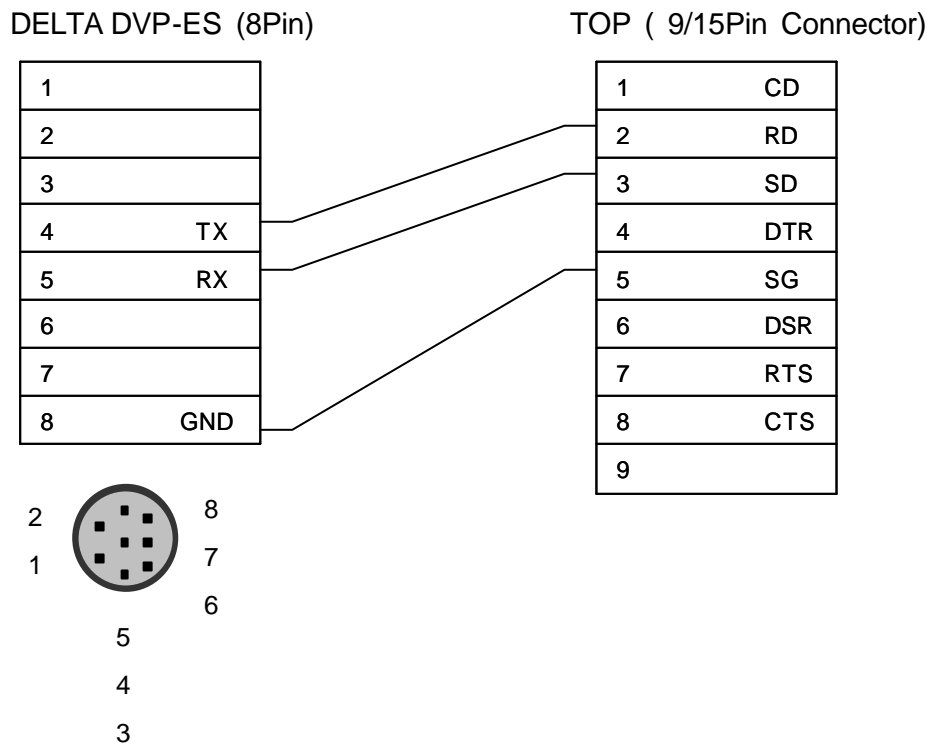
< System Configuration >

This figure shows system configuration to connect DELTA DVP-ES to TOP.

Controller	Comm. Module	Cable	TOP
	←→		
DELTA DVP-ES	None	Refer to Connection Diagram(RS-232)	All TOP

< Cable Diagram >

(1) RS-232 Connection Diagram (DELTA DVP-ES TOP)



< DELTA DVP-ES Setup >

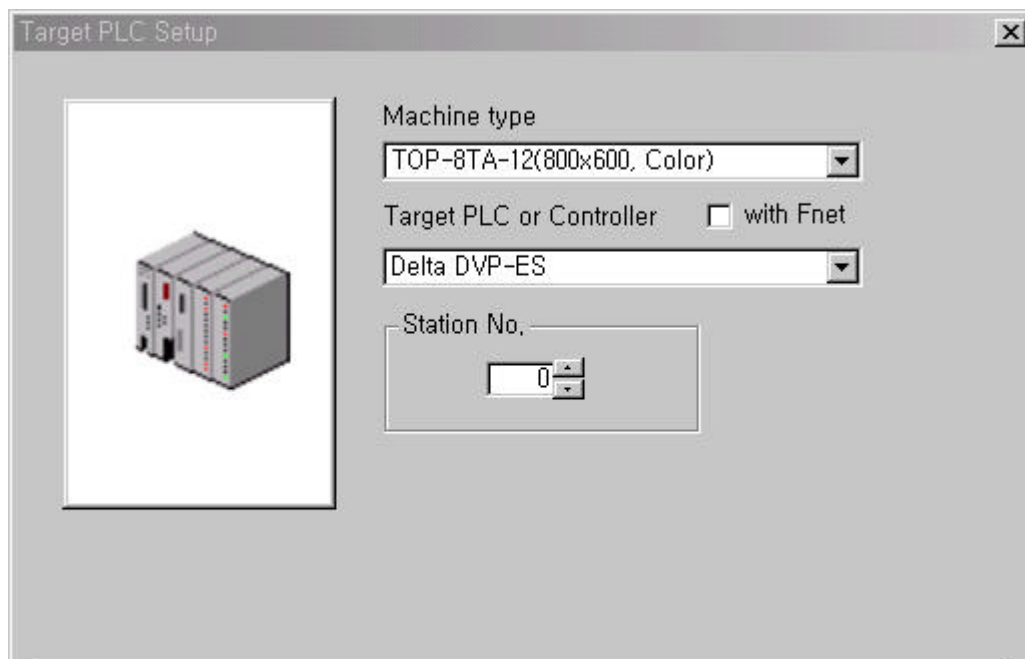
(1) DELTA DVP-ES Setup

PLC Setting	
Data Bit	7 bit or 8 Bit
Stop Bit	1
Parity Bit	Even
Baud Rate	9600 bps

< TOP Setup >

(1) TOP Designer Setup

Select Controller type of DELTA DVP-ES as shown figure.



(2) Serial setup in TOP

Communication setup in 'Comm. Setup' Menu are as follows :

- Serial Baud Rate : Same as controller's setup
- Serial Data Bit : Same as controller's setup
- Serial Stop Bit : Same as controller's setup
- Serial Parity Bit : Same as controller's setup
- Serial Signal Level: Same as controller's setup
- Station No. at Communication Diagnosis(0~31) : Same as controller's setup

1.2. Available Address List

Controller's address to read/write from/to TOP is as following list.

Device	Range	Effective Range	Address
S	000~255	000~127	0000~00FF
S	246~511		0100~01FF
S	512~767		0200~02FF
S	768~1024		0300~03FF
X	000~377(Octal)	000~177(Octal)	0400~04FF
Y	000~377(Octal)	000~177(Octal)	0500~05FF
T	000~255	000~127	0600~06FF
M	000~255	0000~1279	0800~08FF
M	256~511		0900~09FF
M	512~767		0A00~0AFF
M	768~1023		0B00~0BFF
M	1024~1279		0C00~0CFF
C	000~255	000~127 232~255	0E00~0EFF
D	000~255	000~599 1000~1143	1000~10FF
D	256~511		1100~11FF
D	512~767		1200~12FF
D	768~1023		1300~13FF
D	1024~1279		1400~14FF